



Web Link 1.0  
**Setup Guide**

2005/2/1

## Introduction

Link popularity is becoming a more and more important index of your web pages. Higher link popularity means more chance your web sites are exposed to a greater world audience. Web Link not only collects the back links to your web sites but also evaluates the importance of these back links. After determining the high value links, Web Link will also help you to monitor these back links and notify you when the links are broken.

Before using Web Link for the first time, some one-time options need to be setup. This can be done from the Options dialog from the Tools menu. This document details how to configure Web Link.

## Connection Settings

### Maximum Connections

The maximum connections setting controls the number of search operations that can run concurrently. Setting this option to a higher number will make scheduled jobs run faster but will consume more computer resources. For example, if set to 10, there will be 10 search job running at the same time. The default value for this option is 4.

### Maximum Pages

The maximum pages setting affects the amount of search result data stored to the database. For example, if set to 10, then for each search engine there will be a maximum of 10 pages of data recorded to the Web Link database. The default maximum pages value is 5.

## Action Settings

Action properties describe the notification actions to take as differentials in the monitored area are detected. Such notifications can be sent via audible alerts, email, or short message service (SMS). In addition Web Monitor can invoke a dedicated program to run when an update is found. Set the default actions, if a task's action is "Use default", then these action settings will be applied.

## Sound Setting

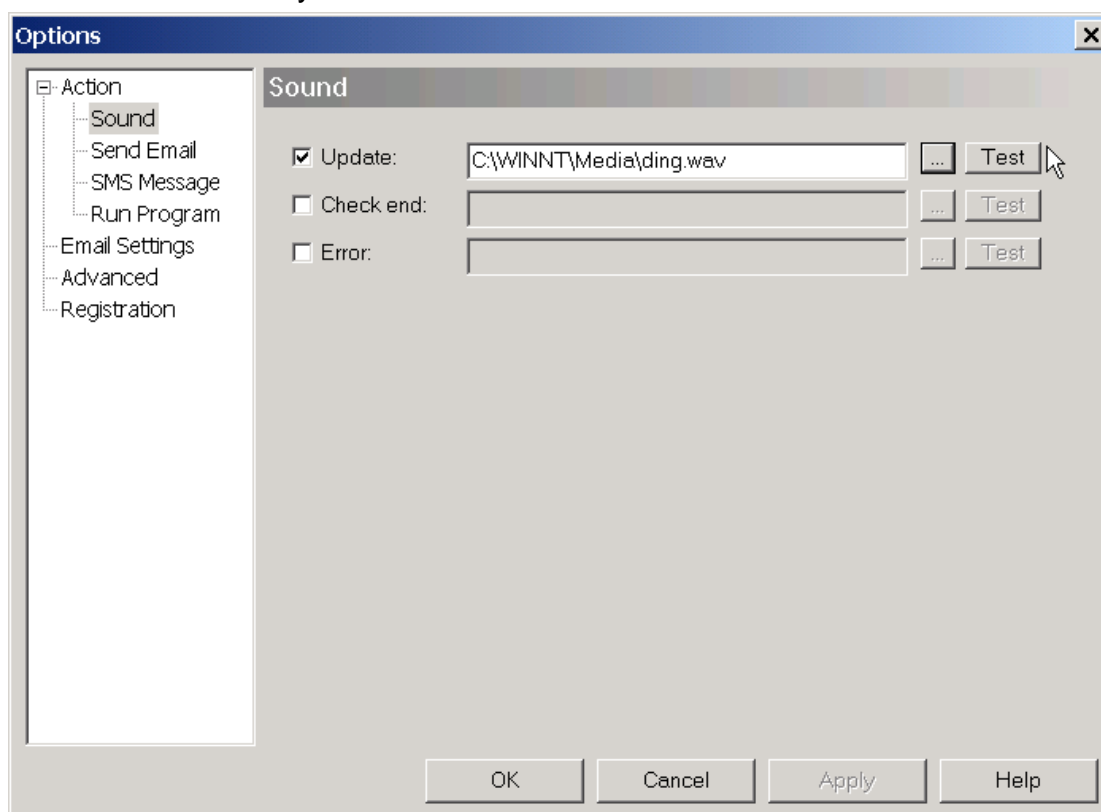
You can set a sound notification for various conditions. Web Monitor will play a

sound file when the condition is met. For example, such as when an update is detected. Use the edit field to point to a wav file to play. If empty then the default sound will be used. Only \*.wav sound files are supported. Use the “Test” button to confirm the sound file is the one you want.

**Update field:** Play sound when change is detected.

**Check end field:** Play sound when check finished.

**Error field:** Play sound when check error.



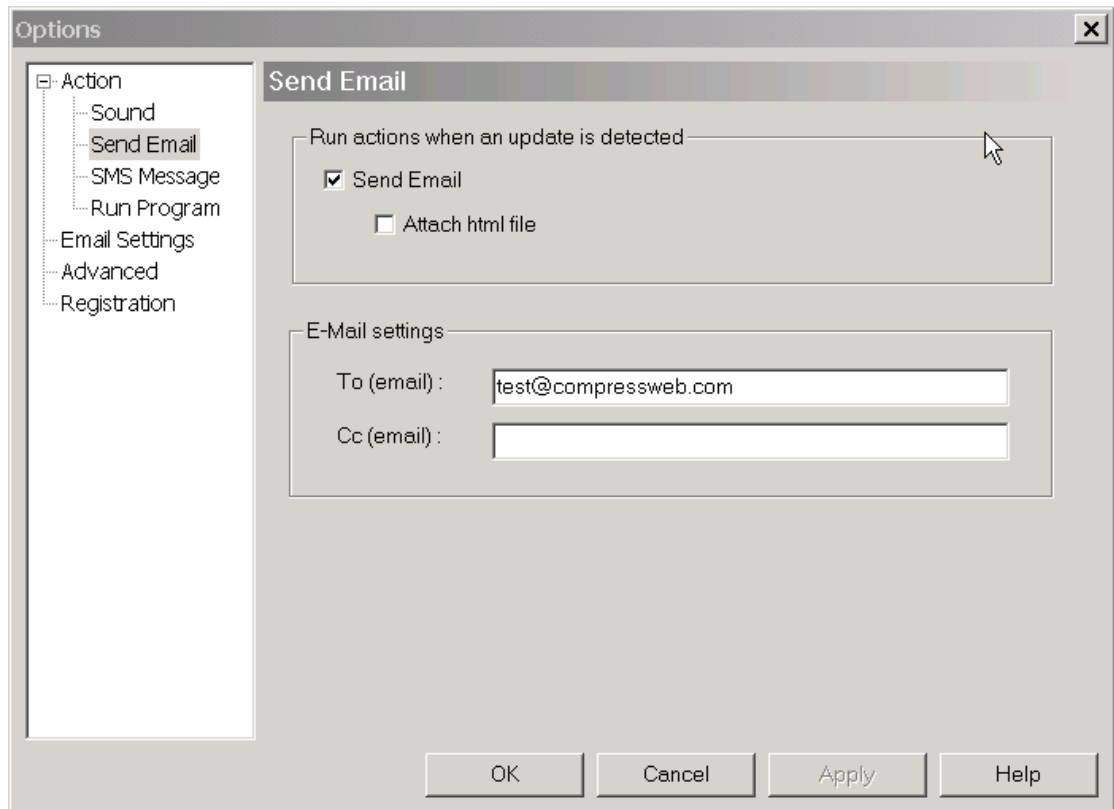
## Email Settings

Send an email message when web page is updated.

**Send Email field:** When Web Monitor detects a change, send email to notify someone. (Please make sure the SMTP setting in **Global Option Dialog** is correct)

**Attach html file field:** Attach the saved html using MIME encoding. Otherwise send plain text email.

**To field:** The recipient of the email notification.



## SMS Setting

Send an SMS message when web page is updated.

**By Email field:** If your mobile service provider has a SMS to Email gateway, you can use this gateway to get a reliable SMS service.

**Directly, U.S. only field:** Web Monitor can send SMS without a gateway.

**Phone Num field:** The cell phone number.

**Update field:** If SMS doesn't work, please click this button to update SMS commands.

The screenshot shows the 'Options' dialog box with the 'SMS Message' section selected in the left-hand tree view. The 'SMS Message' section is titled 'SMS Message' and contains the following options and fields:

- SMS Message
- By Email
  - Email Addr:
- Directly, U.S. only
  - Phone Num:
- 

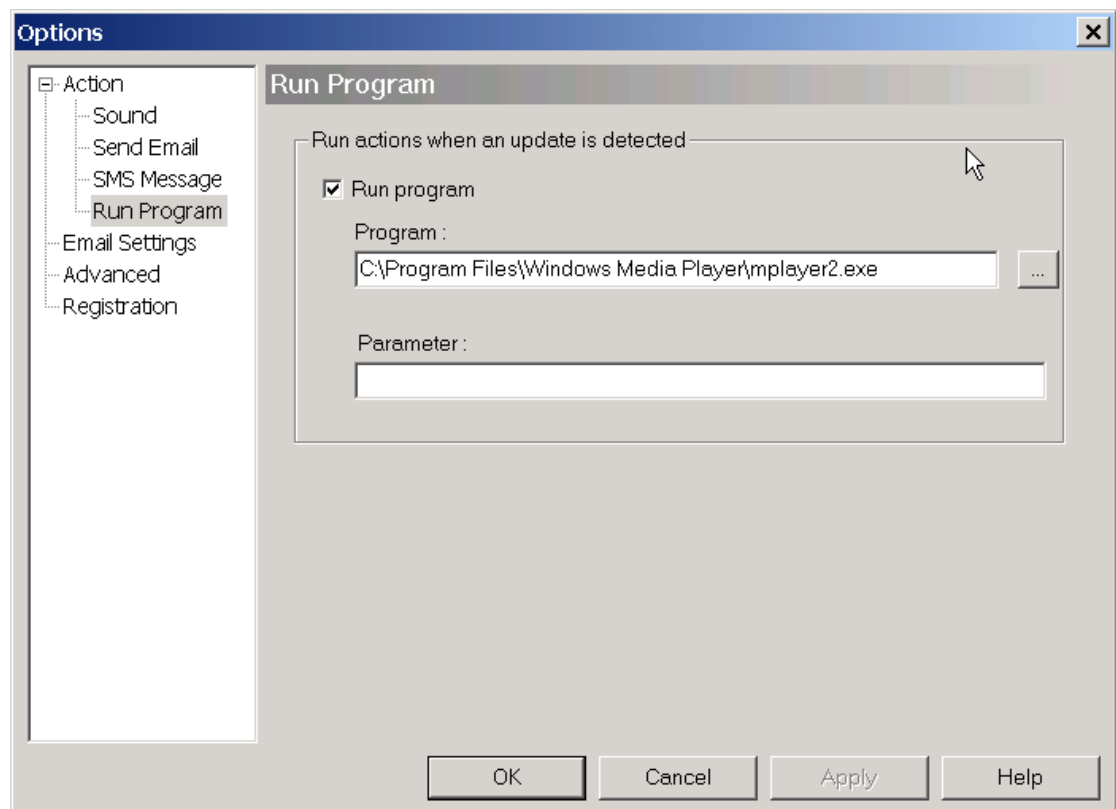
At the bottom of the dialog box, there are four buttons: , , , and .

## Run Program Setting

Run a program when web page is updated. The program to run can be selected through the browse button next to the program edit field. If parameters are required, put them in the parameter field.

**Program field:** Specify the program's executable file.

**Parameter field:** Specify the parameters (optional)



# Email Settings

Configure the SMTP mail server settings, Web Monitor will send email notifications using this account. The SMTP server must be valid, otherwise the notification will not be sent.

**Name field:** set the sender's name.

**Email Address field:** set the sender's email address.

**SMTP server field:** set a server for sending email notification.

**Port field:** set a SMTP port number, the default value is 25.

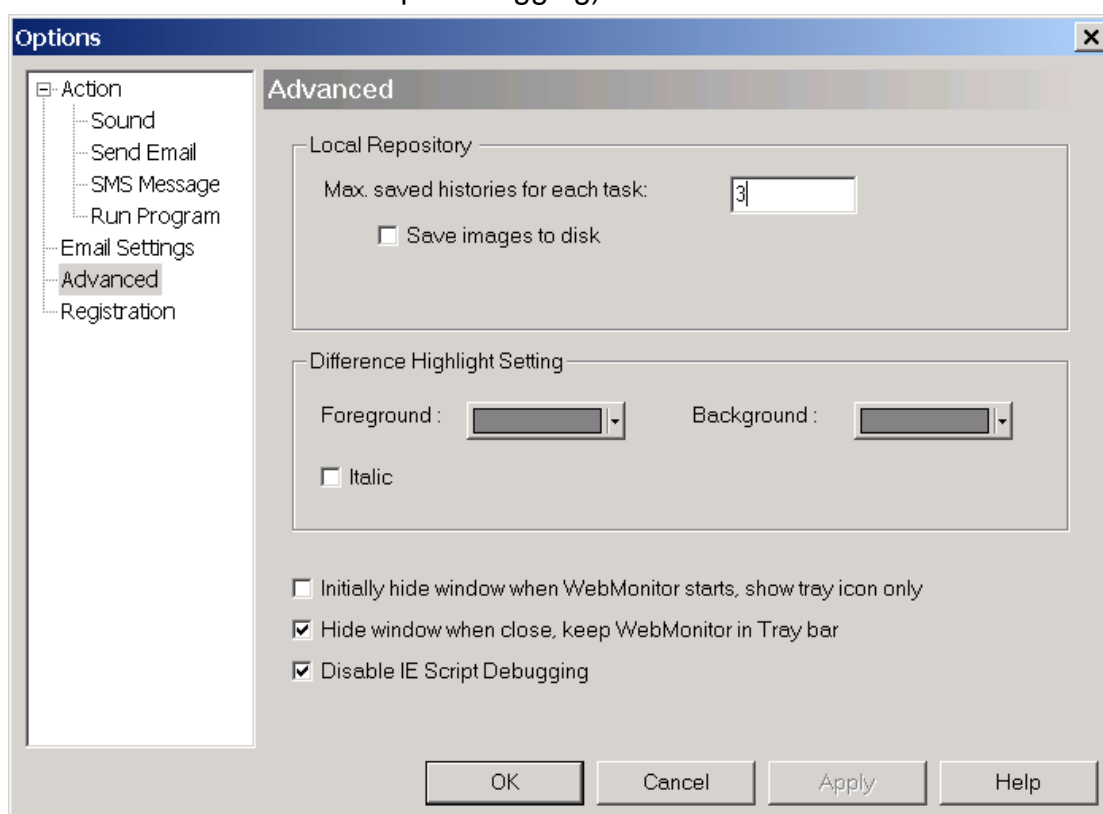
**SMTP Authentication, User/Password field:** Used for security. The account should match the email sender's email address.

The screenshot shows a Windows-style dialog box titled "Options" with a sub-tab titled "Email Settings". On the left, a tree view shows a hierarchy: Action (expanded), Sound, Send Email, SMS Message, Run Program, Email Settings (selected), Advanced, and Registration. The main area contains the following fields and controls:

- Name: myname
- Email Address: myname@compressweb.com
- SMTP server: ms.compressweb.com
- Port: 25
- SMTP Authentication
- User/Password: (two empty text boxes)
- Send Test Email (button)
- OK, Cancel, Apply, Help (bottom buttons)

## Advanced Settings

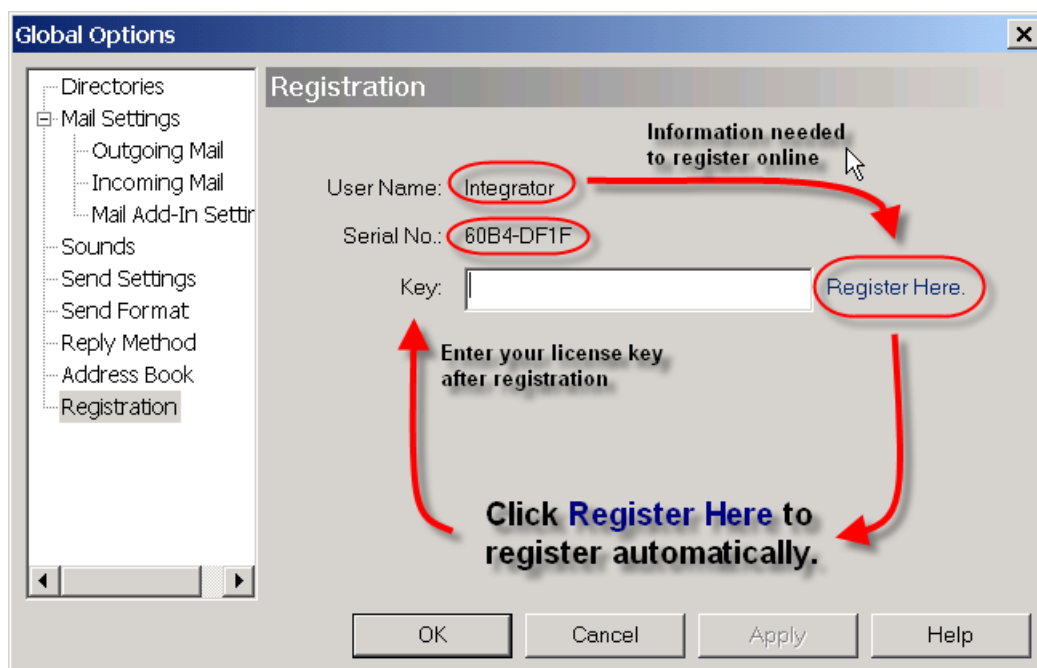
- **Max saved histories for each task:** Specify how much historical data (saved html versions) would you like to keep saved to disk.
- **Save images to disk:** If the html contains images, save them also.
- **Difference Highlight Setting:** Web Monitor can highlight changes in the saved html files, use this option to set the change highlight color.
- **Initially hide Web Link widows when Web Link starts, show tray icon only.**
- **Hide Web Link windows when the main window closes, keep Web Monitor in Tray bar.**
- **Disable IE Script Debugging:** If Script Debugging is enabled; a debugger will be invoked when Web Monitor detects a script error. This is an Internet Explorer option. (It is recommend that this option is selected to disable Script Debugging)



# Registration

## Registration:

- **User Name:** your name.
- **Serial No:** your disk serial number.
- **Key:** your registration key.
- **Register Here:** Clicking this link will redirect to our online registration site.



If you would like to register manually, please follow the instructions below: First, you need to provide your user name and disk serial number as it appears on the registration tab. Once registered, we will send you a registration code, which should be entered in the Key text field on the Registration page. All features will be enabled for the Standard/Professional/Enterprise versions after entering a valid registration key.